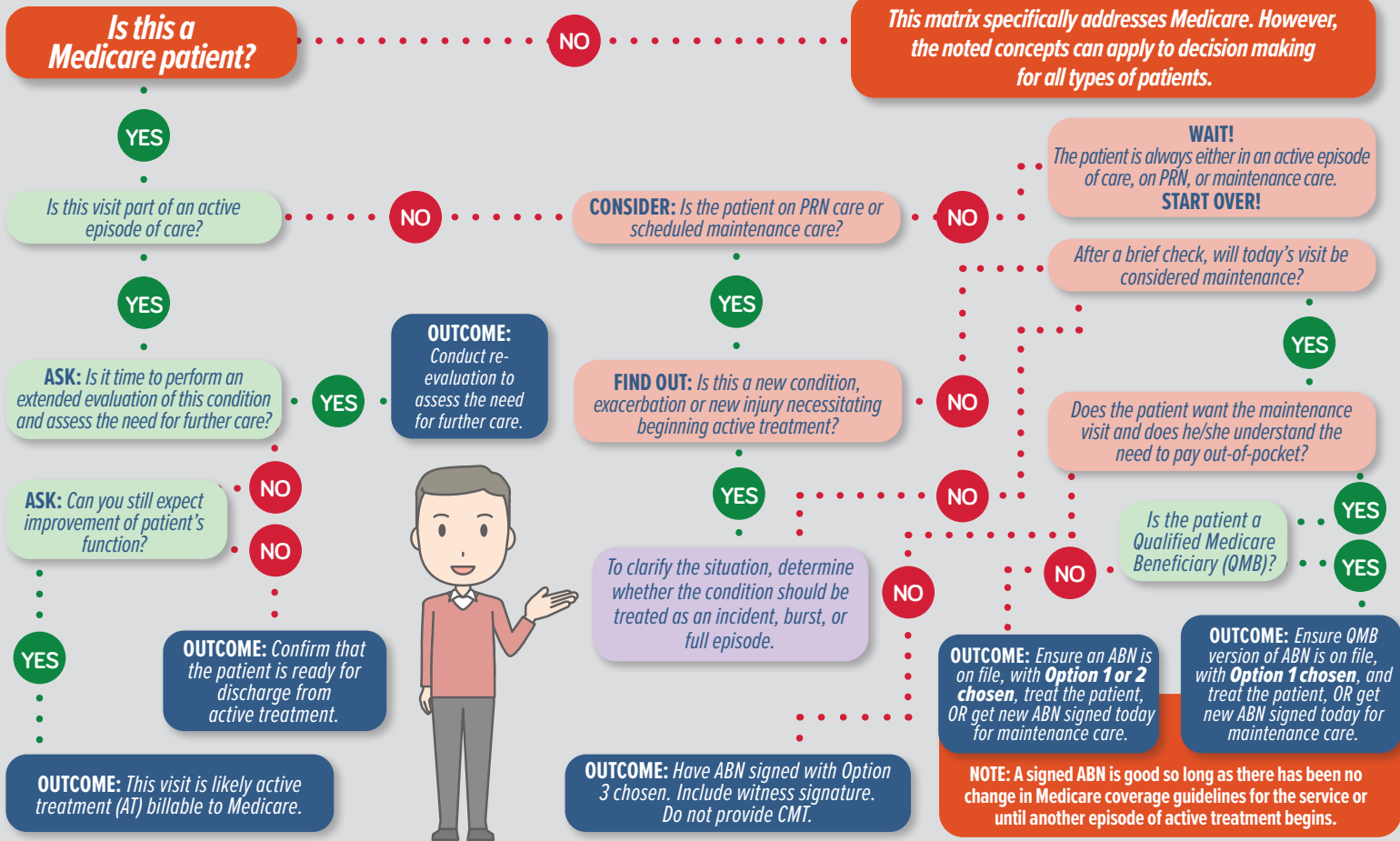


KMC University's Medicare Decision Making Matrix

Use this flowchart to help determine whether a Medicare patient's visit is active or maintenance care. Follow the prompts to support your decision making for an appropriate outcome.



OUTCOME: This visit is likely active treatment (AT) billable to Medicare.

OUTCOME: Confirm that the patient is ready for discharge from active treatment.

OUTCOME: Conduct re-evaluation to assess the need for further care.

OUTCOME: Have ABN signed with Option 3 chosen. Include witness signature. Do not provide CMT.

OUTCOME: Ensure an ABN is on file, with **Option 1 or 2 chosen**, treat the patient, OR get new ABN signed today for maintenance care.

OUTCOME: Ensure QMB version of ABN is on file, with **Option 1 chosen**, and treat the patient, OR get new ABN signed today for maintenance care.

NOTE: A signed ABN is good so long as there has been no change in Medicare coverage guidelines for the service or until another episode of active treatment begins.