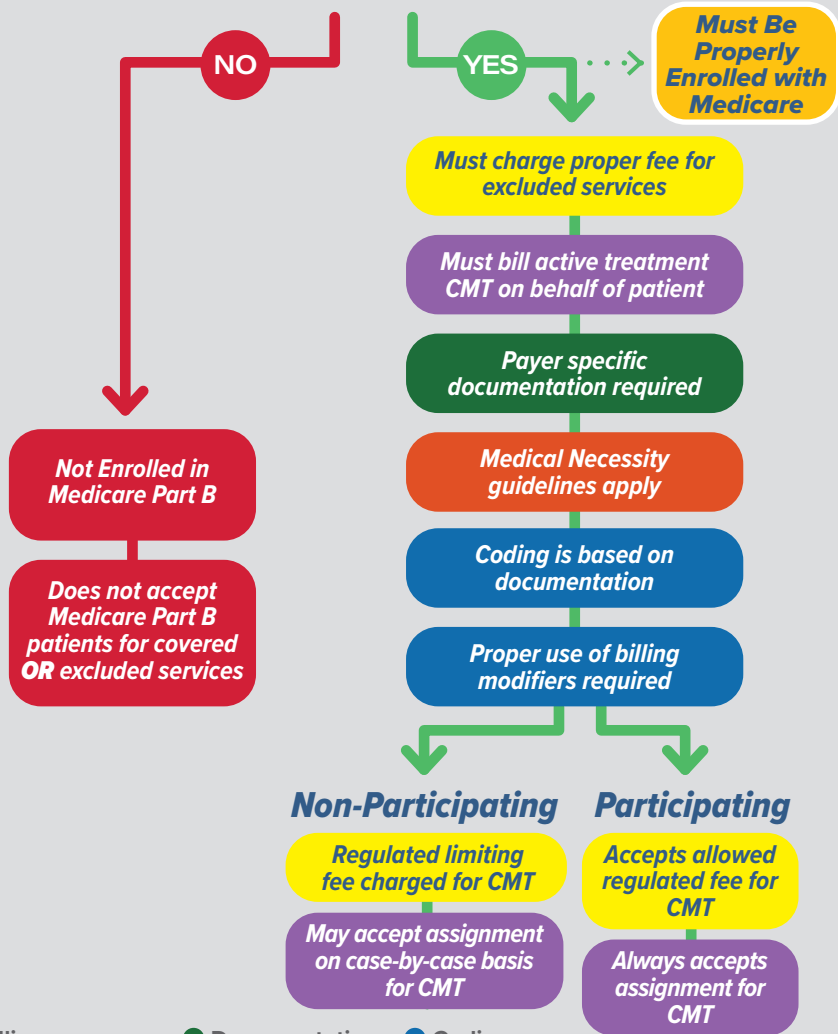




# Practice Decision Matrix

Providers must make business decisions about the practice's financial set-up and how it relates to various patient payer classes. The responsibilities associated with each type of patient vary. These charts outline the practice's obligations by payer class to assist with these business decisions.

## Accept and Treats Medicare Part B Patients



- Billing
- Documentation
- Coding
- Patient Finances
- Compliance

## Accepts and Treats Medicare Part C Patients



**Paying Out Of Pocket/Not Insured**

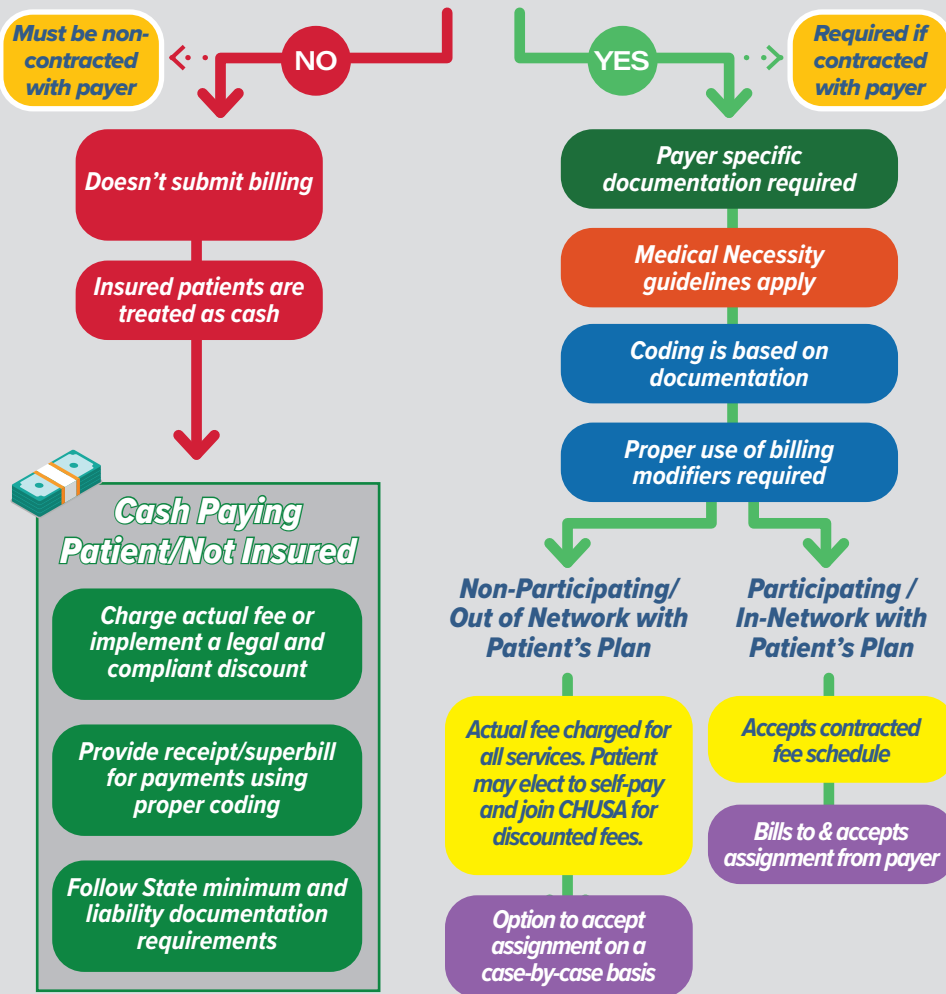
- Charge Part B allowed/limiting fee for active CMT Implement a legal and compliant discount for excluded services
- If submission not required, provide receipt/superbill for payments using proper coding
- Follow State minimum and liability documentation requirements

- Billing
- Documentation
- Coding
- Patient Finances
- Compliance



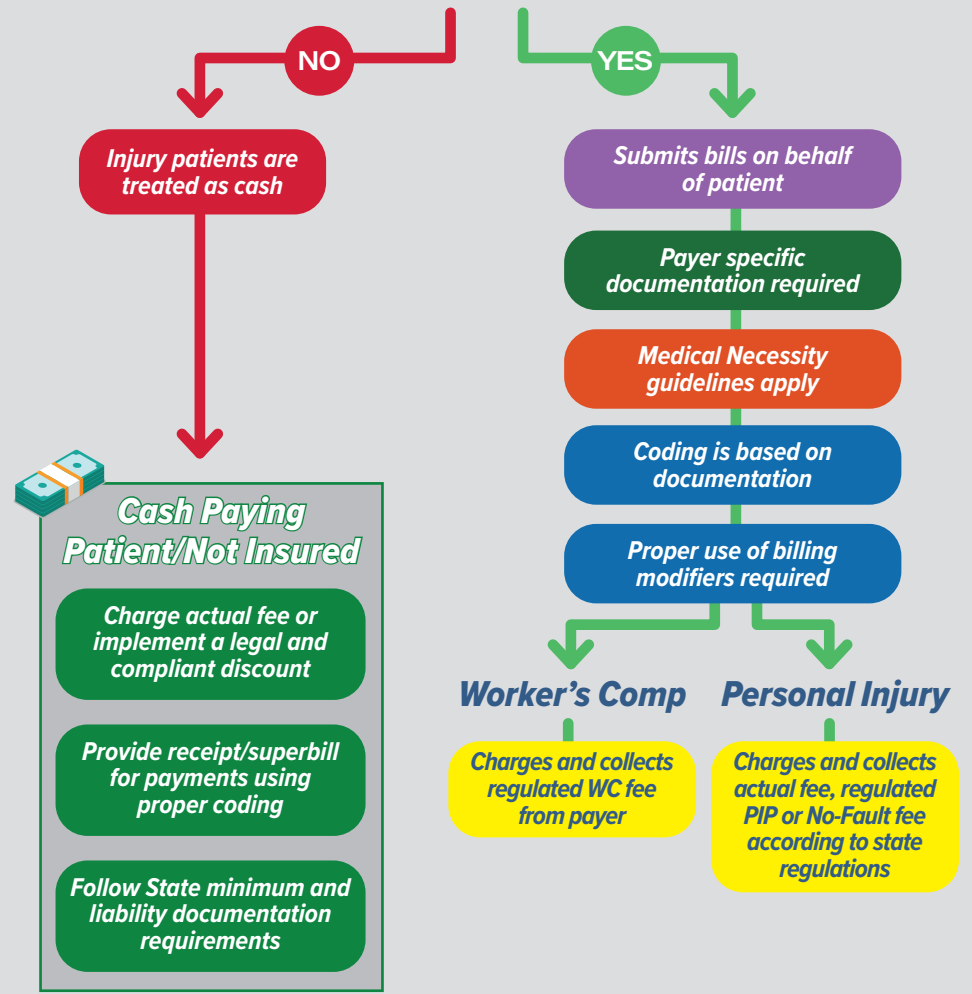
# Practice Decision Matrix

## Submits Health Insurance Bills for Patients



- Billing
- Documentation
- Coding
- Patient Finances
- Compliance

## Submits Bills for PI or WC Cases for Patients



- Billing
- Documentation
- Coding
- Patient Finances
- Compliance