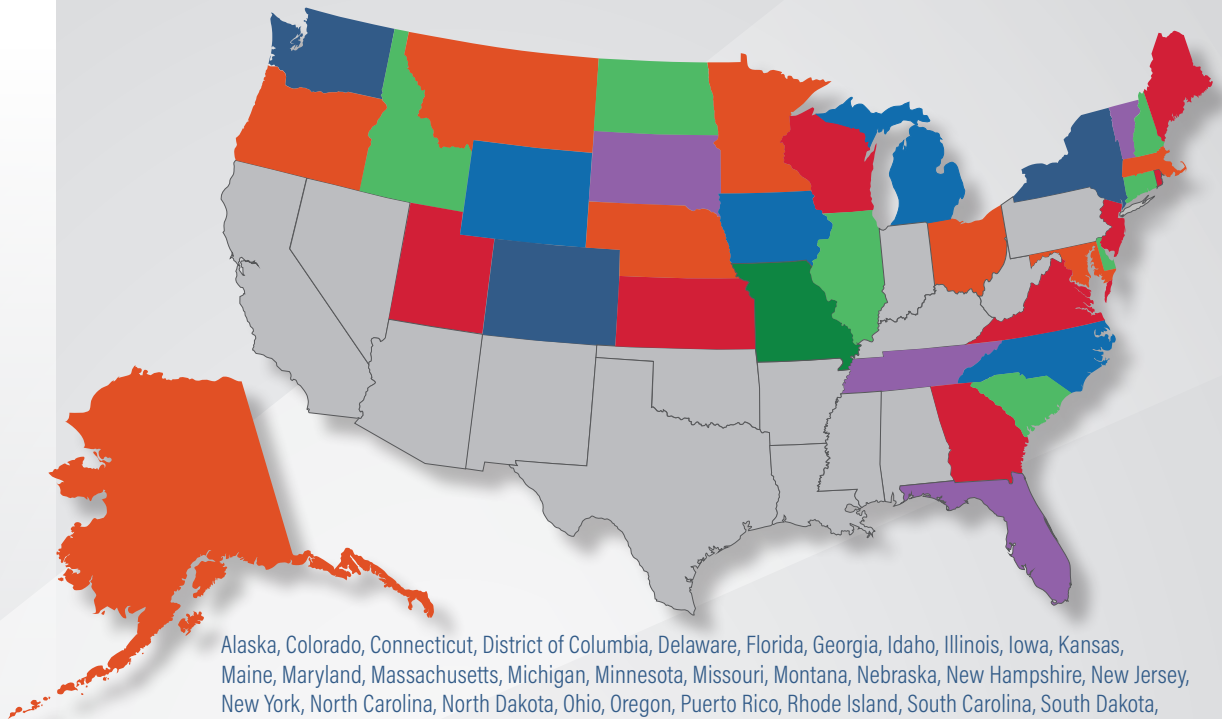




## How To Claim Your CEU Credits

### STATES ELIGIBLE FOR CEU CREDITS THROUGH KMC UNIVERSITY



Alaska, Colorado, Connecticut, District of Columbia, Delaware, Florida, Georgia, Idaho, Illinois, Iowa, Kansas, Maine, Maryland, Massachusetts, Michigan, Minnesota, Missouri, Montana, Nebraska, New Hampshire, New Jersey, New York, North Carolina, North Dakota, Ohio, Oregon, Puerto Rico, Rhode Island, South Carolina, South Dakota, Tennessee, Utah, Vermont, Virginia, Washington, Wisconsin, Wyoming.

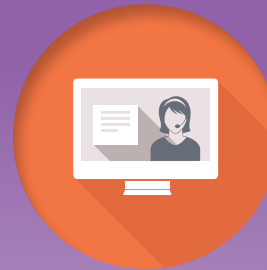
More details on these states' allowable online hours can be found here:  
<https://www.kmcuniversity.com/continuing-education-units-ceus-kmc-university>



#### DID YOU ATTEND LIVE?

- The test must be completed before midnight Eastern Time the day of the webinar, at **www.chirocredit.com/kmcu** using the code provided during the webinar.
- Redeem the code by logging in to your account -or create one if you don't have one.
- Once the code has been redeemed, the test will load into your account.
- Once you go to your "Personal Home Page," the course and test will be listed under "Incomplete Courses."
- Click on "Incomplete Courses" and follow the prompts given.

**KMC University offers at least ONE CEU webinar a month.**



#### NEED TO WATCH THE WEBINAR LATER?

- The test and the recording of the live presentation will be uploaded within 48 hours to **www.chirocredit.com/kmcu**
- They will be available to take at no cost for our members, but only until the last day of the same calendar month.
- In order to access them, a different code from that of the live presentation will need to be used. KMCU will provide this code on your dashboard.
- All the next steps are the same as if you attended the live presentation (on the left, second bullet onwards)
- If you attended the live presentation, but did not complete the test the same day, you need to follow this process and re-watch the webinar to be eligible for the quiz.